

# PHS Loft Stairs Hood

PHS Loft Stairs Hood is an easy solution to insulate your loft stairs while maintaining easy access to your loft. Our loft stairs hood will seal and help insulate this vulnerable point in your home's defense against budget-breaking energy loss. This loft stairs hood is simple to install, requiring max. 30mins. Immediately the loft stairs hood will start reducing energy losses, resulting in lower heating bills.

The loft stairs hood is made of 340GSM heavy duty radiant barrier bonded to a polyester fiber insulation making this loft access insulation light, thin, and effective. This insulated loft stairs hood uses two heavy-duty zippers to allow easy access to the loft. As an added benefit, the loft stairs hood thermal and airtight barrier also helps keep your house clean and improves your indoor air quality by keeping dust and insulation in the attic where they belong, and not in your living environment.

## Advantages

- Airtight so eliminates draughts through your loft stairs.
- Insulating, retains the heat in your home.
- Flexible and lightweight.
- Simple to install.
- 2nr. Heavy duty zippers.
- Highly durable, insulated and double radiant fabric.

## Installation

1. Carefully unpack contents and unfold the loft hood.
2. Orientate the loft hood such that the end where the zipper is at its lowest is close to the stairs hinge.
3. Use the supplied stapler and staples to fix the hood black band to the stairs frame.
4. The black band should be sealed fully to the stairs frame, including and especially at the corners.

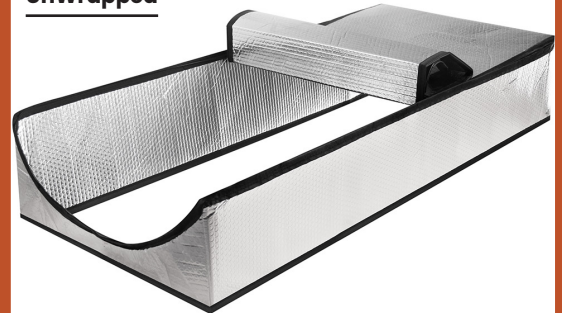
\*Every care should be taken when using this product and similarly using your loft stairs.

\*The supplier bears no responsibility for inappropriate use of this product.

**Wrapped**



**UnWrapped**



## Technical Data

<b>Material</b>	Double radiant fibre	
<b>Thermal Conductivity</b>	0.037 W/(m.K)	(ASTM C518-21)
<b>Thermal Resistance</b>	0.161 (m <sup>2</sup> .K/W)	
<b>Sizes (L x W x H)</b>		
1190 x 590 x 280mm	1140 x 550 x 280mm	
1080 x 510 x 280mm	1380 x 650 x 280mm	

Passive House Systems IE  
P31 W950, Ballincollig, Cork, Ireland  
tel. (+353) 021 4872664  
[www.passivehousesystems.ie](http://www.passivehousesystems.ie)

Passive House Systems UK  
CM16 6th, Epping, Essex, UK  
tel. (+44) 0333 880 2347  
[www.passivehousesystems.co.uk](http://www.passivehousesystems.co.uk)

Passive House Systems products are used by diverse customer base for a wide range of technical and industrial applications. The demands made on our products vary considerably from application to application. We strongly advise users to test the products suitability for their own particular requirement.

All data and recommendations contained in this Technical Datasheet are based on our own test results and practical experience and are aimed at helping customers select the appropriate product. This information is provided without liability. We reserve the right to change the technical specification without prior notice. Samples are available free of charge. Our sales team are available to help support all technical specifications for our products.